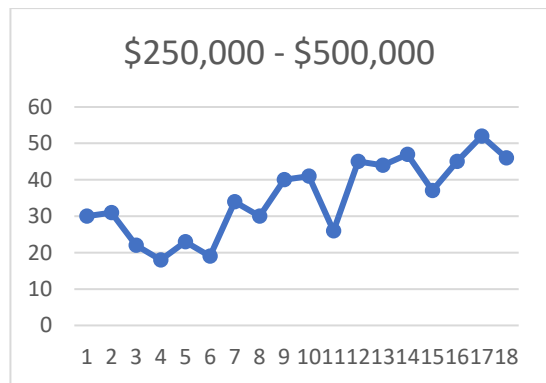
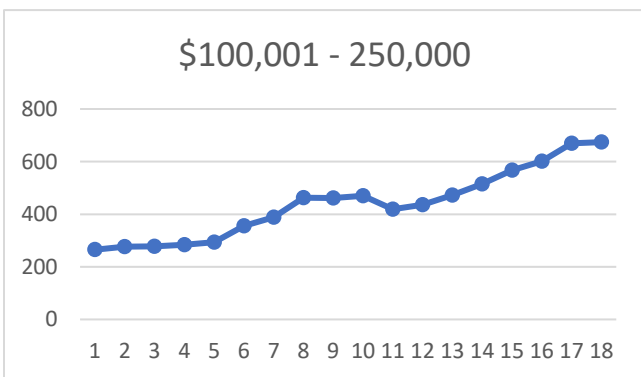
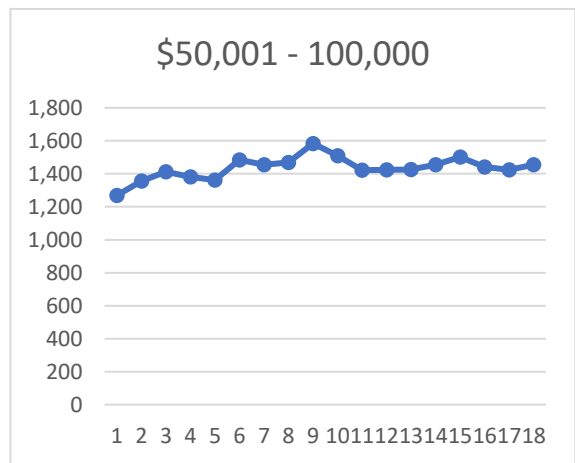
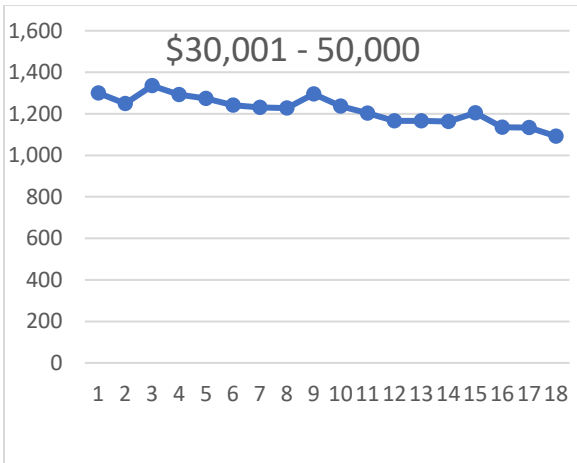
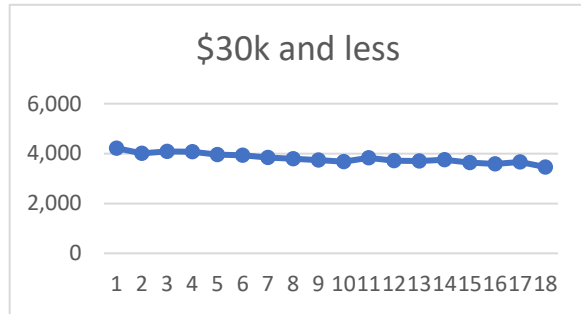
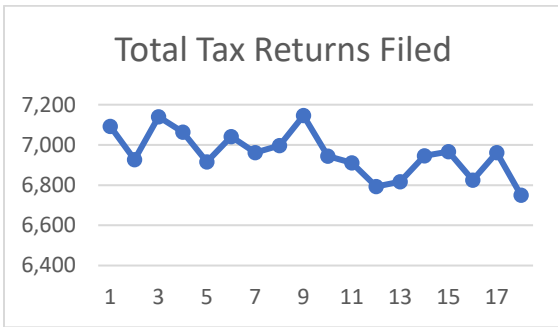
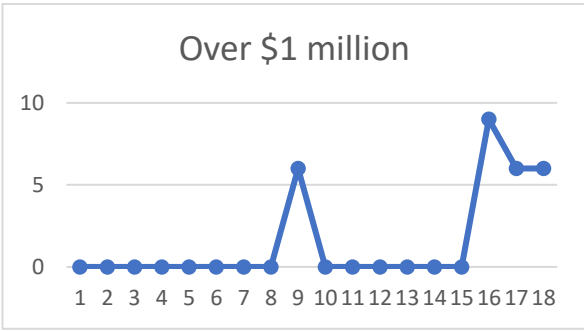
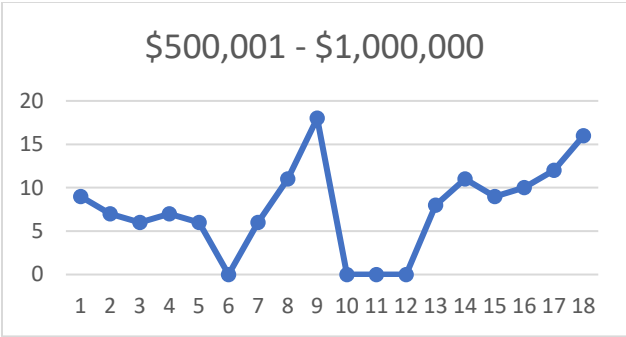


STATS Indiana

Income Trends by Categories – 1999 – 2016

Source: Indiana State Tax Returns





Number of Returns filed by Income Category – 1999 – 2016

	# of Returns 1999	# of Returns 2000	# of Returns 2001	# of Returns 2002	# of Returns 2003	# of Returns 2004	# of Returns 2005	# of Returns 2006	# of Returns 2007	# of Returns 2008	# of Returns 2009	# of Returns 2010	# of Returns 2011	# of Returns 2012	# of Returns 2013	# of Returns 2014	# of Returns 2015	# of Returns 2016
Total	7,093	6,926	7,140	7,064	6,916	7,042	6,962	6,996	7,146	6,945	6,911	6,793	6,817	6,946	6,967	6,825	6,962	6,750
\$30,000 and less	4,218	4,005	4,082	4,078	3,958	3,933	3,846	3,792	3,741	3,679	3,835	3,715	3,697	3,752	3,643	3,584	3,665	3,460
\$30,001 to \$50,000	1,300	1,249	1,335	1,292	1,273	1,241	1,231	1,228	1,296	1,237	1,203	1,166	1,166	1,163	1,205	1,135	1,134	1,092
\$50,001 to \$100,000	1,269	1,356	1,413	1,382	1,362	1,485	1,455	1,469	1,584	1,509	1,423	1,424	1,426	1,456	1,501	1,441	1,424	1,456
\$100,001 to \$250,000	265	276	278	284	293	356	388	463	461	470	419	436	472	515	567	601	669	674
\$250,001 to \$500,000	30	31	22	18	23	19	34	30	40	41	26	45	44	47	37	45	52	46
\$500,001 to \$1,000,000	9	7	6	7	6		6	11	18			8	11	9	10	12	16	
Over \$1Mil	0	0	0	0	0	0	0	0	6	0	0	0	0	0	0	9	6	6